

STANDARD GROUND TAXI PROCEDURES

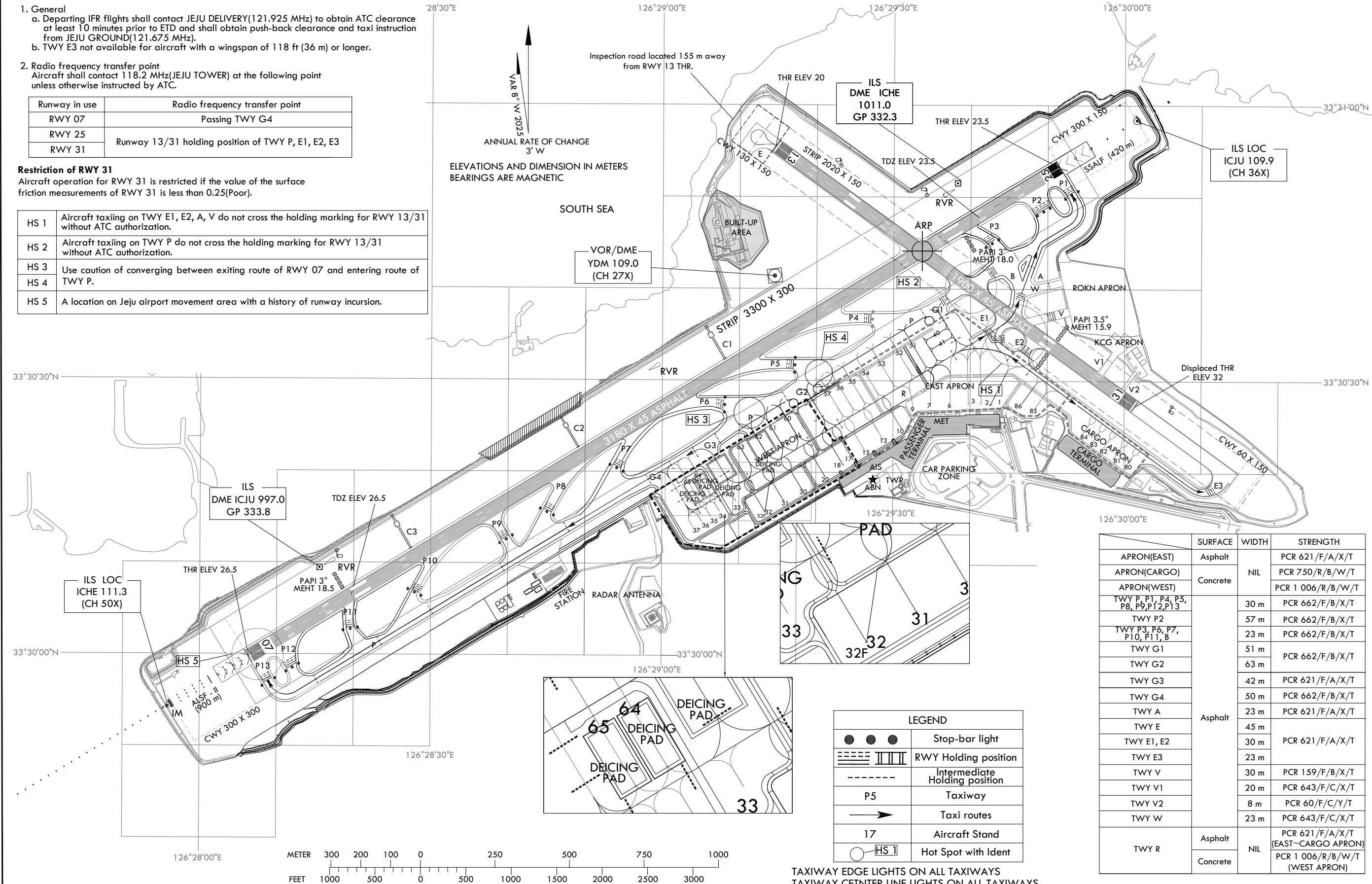
1. General
a. Departing IFR flights shall contact JEJU DELIVERY(121.925 MHz) to obtain ATC clearance at least 10 minutes prior to ETD and shall obtain push-back clearance and taxi instruction from JEJU GROUND(121.675 MHz).
b. TWY E3 not available for aircraft with a wingspan of 118 ft (36 m) or longer.
2. Radio frequency transfer point
Aircraft shall contact 118.2 MHz(JEJU TOWER) at the following point unless otherwise instructed by ATC.

Runway in use	Radio frequency transfer point
RWY 07	Passing TWY G4
RWY 25	Runway 13/31 holding position of TWY P, E1, E2, E3
RWY 31	

Restriction of RWY 31

Aircraft operation for RWY 31 is restricted if the value of the surface friction measurements of RWY 31 is less than 0.25(Poor).

HS 1	Aircraft taxiing on TWY E1, E2, A, V do not cross the holding marking for RWY 13/31 without ATC authorization.
HS 2	Aircraft taxiing on TWY P do not cross the holding marking for RWY 13/31 without ATC authorization.
HS 3	Use caution of converging between exiting route of RWY 07 and entering route of TWY P.
HS 4	
HS 5	A location on Jeju airport movement area with a history of runway incursion.



	SURFACE	WIDTH	STRENGTH
APRON(EAST)	Asphalt		PCR 621/F/A/X/T
APRON(CARGO)	Concrete	NIL	PCR 750/R/B/W/T
APRON(WEST)			PCR 1 006/R/B/W/T
TWY P, P1, P4, P5, P8, P9, P12, P13	Asphalt	30 m	PCR 662/F/B/X/T
TWY P2		57 m	PCR 662/F/B/X/T
TWY P3, P6, P7, P10, P11, B		23 m	PCR 662/F/B/X/T
TWY G1		51 m	PCR 662/F/B/X/T
TWY G2		63 m	
TWY G3		42 m	PCR 621/F/A/X/T
TWY G4		50 m	PCR 662/F/B/X/T
TWY A		23 m	PCR 621/F/A/X/T
TWY E		45 m	PCR 621/F/A/X/T
TWY E1, E2		30 m	
TWY E3		23 m	
TWY V		30 m	PCR 159/F/B/X/T
TWY V1	Asphalt	20 m	PCR 643/F/C/X/T
TWY V2		8 m	PCR 60/F/C/Y/T
TWY W		23 m	PCR 643/F/C/X/T
TWY R	Concrete	NIL	PCR 621/F/A/X/T (EAST-CARGO APRON) PCR 1 006/R/B/W/T (WEST APRON)

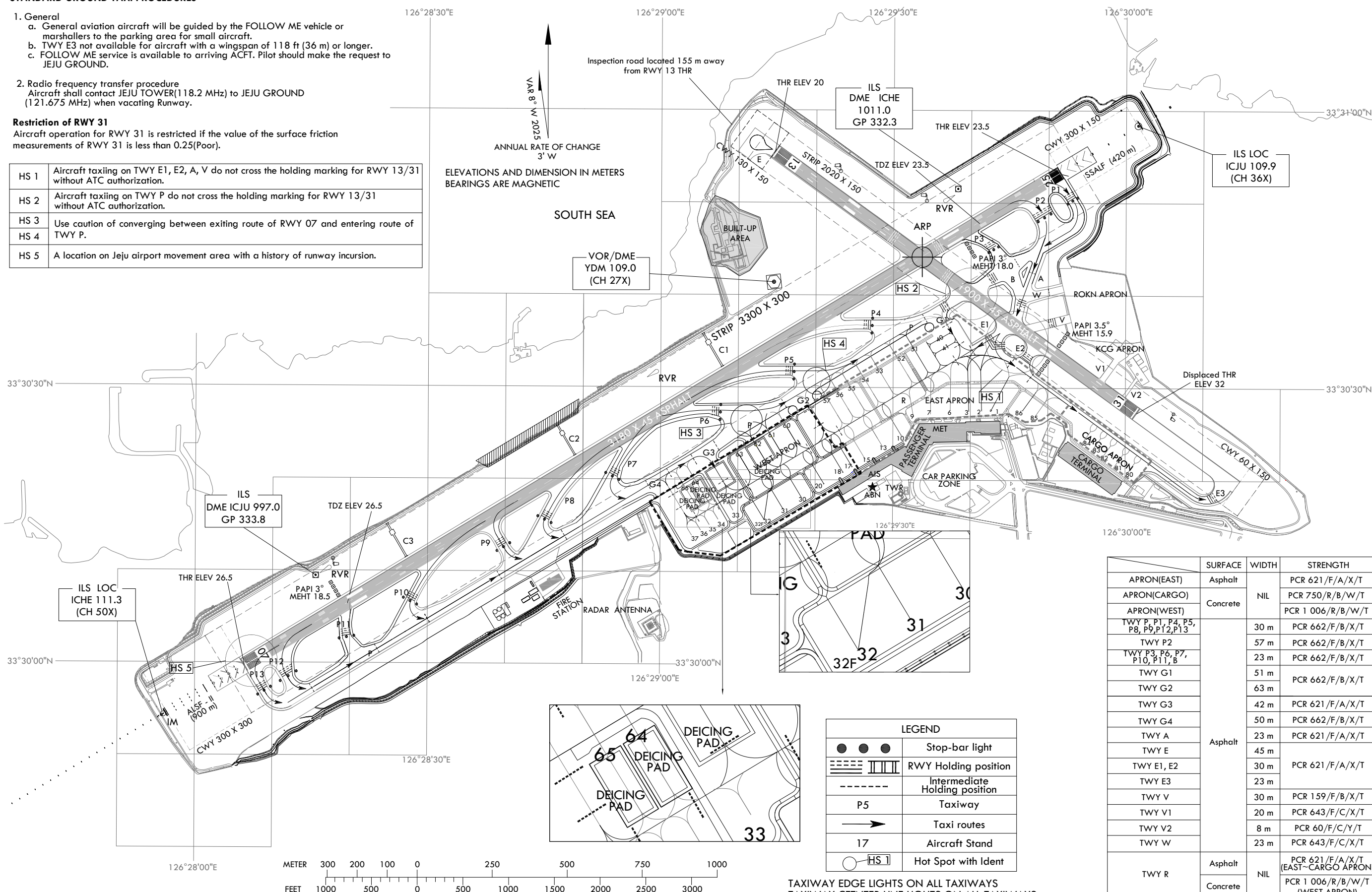
STANDARD GROUND TAXI PROCEDURES

- General
 - General aviation aircraft will be guided by the FOLLOW ME vehicle or marshallers to the parking area for small aircraft.
 - TWY E3 not available for aircraft with a wingspan of 118 ft (36 m) or longer.
 - FOLLOW ME service is available to arriving ACFT. Pilot should make the request to JEJU GROUND.
- Radio frequency transfer procedure
Aircraft shall contact JEJU TOWER(118.2 MHz) to JEJU GROUND (121.675 MHz) when vacating Runway.

Restriction of RWY 31

Aircraft operation for RWY 31 is restricted if the value of the surface friction measurements of RWY 31 is less than 0.25(Poor).

HS 1	Aircraft taxiing on TWY E1, E2, A, V do not cross the holding marking for RWY 13/31 without ATC authorization.
HS 2	Aircraft taxiing on TWY P do not cross the holding marking for RWY 13/31 without ATC authorization.
HS 3	Use caution of converging between exiting route of RWY 07 and entering route of TWY P.
HS 4	
HS 5	A location on Jeju airport movement area with a history of runway incursion.



	SURFACE	WIDTH	STRENGTH
APRON(EAST)	Asphalt		PCR 621/F/A/X/T
APRON(CARGO)	Concrete	NIL	PCR 750/R/B/W/T
APRON(WEST)			PCR 1 006/R/B/W/T
TWY P, P1, P4, P5, P8, P9, P12, P13		30 m	PCR 662/F/B/X/T
TWY P2		57 m	PCR 662/F/B/X/T
TWY P3, P6, P7, P10, P11, B		23 m	PCR 662/F/B/X/T
TWY G1		51 m	PCR 662/F/B/X/T
TWY G2		63 m	PCR 662/F/B/X/T
TWY G3		42 m	PCR 621/F/A/X/T
TWY G4		50 m	PCR 662/F/B/X/T
TWY A	Asphalt	23 m	PCR 621/F/A/X/T
TWY E		45 m	PCR 621/F/A/X/T
TWY E1, E2		30 m	PCR 621/F/A/X/T
TWY E3		23 m	PCR 621/F/A/X/T
TWY V		30 m	PCR 159/F/B/X/T
TWY V1		20 m	PCR 643/F/C/X/T
TWY V2		8 m	PCR 60/F/C/Y/T
TWY W		23 m	PCR 643/F/C/X/T
TWY R	Asphalt		PCR 621/F/A/X/T (EAST-CARGO APRON)
	Concrete	NIL	PCR 1 006/R/B/W/T (WEST APRON)

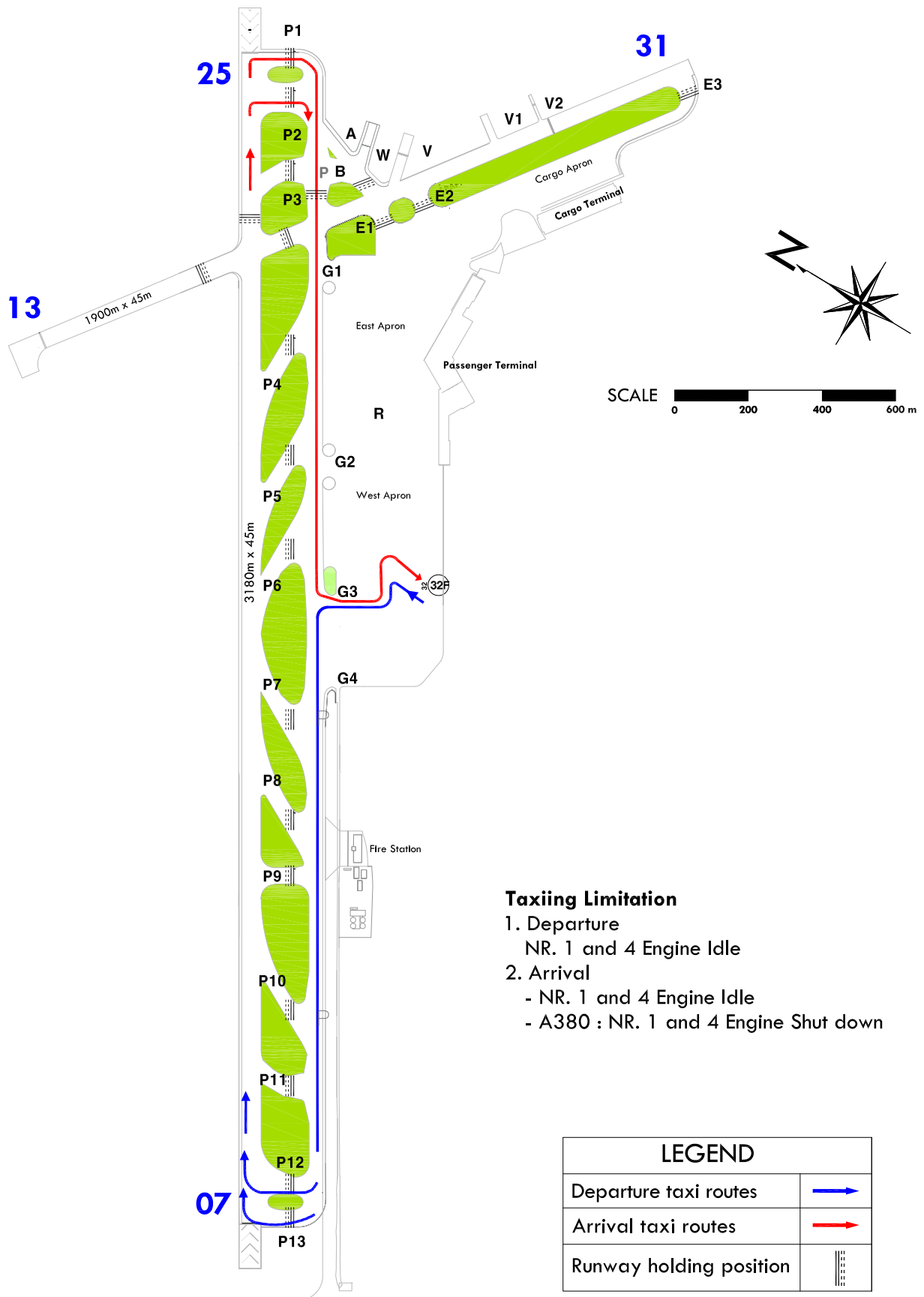
Change : Information of strength(PCN → PCR) for TWYs(V, W, V1, V2).

"F" aircraft Available taxi route - RWY 07 IN USE

JEJU / Jeju Intl

JEJU TWR 118.2
JEJU GND 121.675

Available only for Code Letter "F" Aircraft



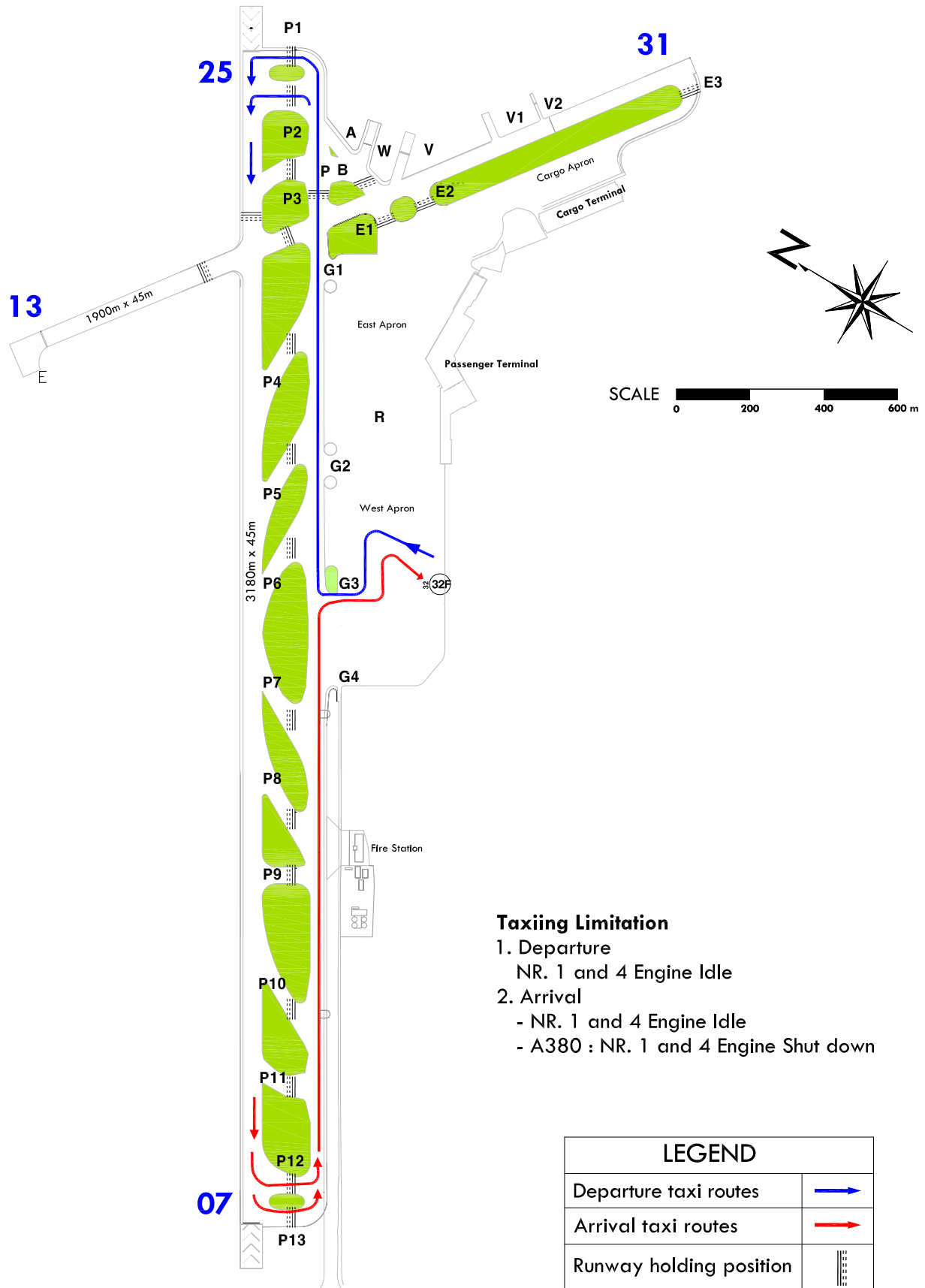
Change : Information of legend(stop-bar → RWY holding position).

"F" aircraft Available taxi route - RWY 25 IN USE

JEJU / Jeju Intl

JEJU TWR 118.2
JEJU GND 121.675

Available only for Code Letter "F" Aircraft



Change : Information of legend(stop-bar → RWY holding position).